



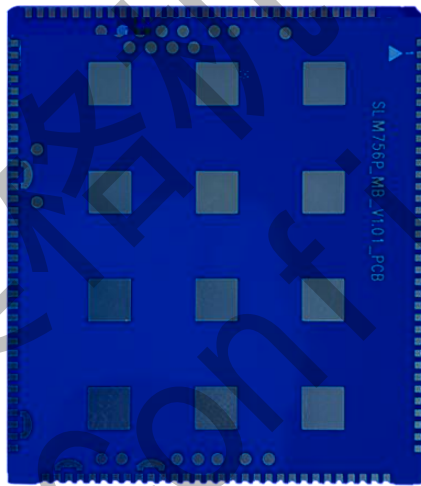
股票代码:002881

全球领先的物联网终端及无线数据方案提供商

Meig Confidential
美格机密

LM756





D (&

	B R T D) * *
4AF	B R T 2(S 89

	E5 9DA2) S
	6G5 C 2) S
	6586	4 R) S) S
	8 ACD	4 R)& S)& S
D:	5D5D)G D: H 8 8 4D73 H 8 E5D 8 8 4D73 8 6G5 45 2 8 45 2	
5 R	R + 95 (4 D +F : RT + :A 5D: R	
4R R	: RT + R + :A 4D: R , + :A 4D: R A + R + &) G T) +96G4 9 A 5 I GA) H G82 +9 G T (+9 H G82 GA) A	
	EA	
C		
	G32E	G G)G
	D5:	E7 4R 83
	FD3	E8 7 C46PFD3P3 E FD3
	F2CE	R R
	: 4	7 EA
	DA:	R
	254	
		&G 2
	8 A:	(
	G4 :	
	2	:4 64 6 D :4

--	--	--

pin#	pin name	Pad characteristics	Functional description
1	MIPI_DSI0_LANE3_N	AI, AO	

51	VBUS	PI	USB VBUS Voltage
52	KYPD_PWR_N	DI	Power on key
53	GND	GND	GND
54	RF_WIFI/BT	AI,AO	RF signal
55	GND	GND	GND
56	GND	GND	GND
57	PM_RESIN_N	DI	PMIC reset
58	GPIO7_I2C_SCL	DO;B-PD:nppukp	Configurable I/O I2C or GPIO
59	GPIO6_I2C_SDA	DO;B-PD:nppukp	Configurable I/O I2C or GPIO
60	GND	GND	GND
61	RF_GPS	AI	RF signal-GPS ANT
62	GND	GND	GND
63	RF_FM	AI	RF signal-FM ANT
64	GND	GND	GND
65	RF_DIV	AI	RF signal-DIV ANT
66	GND	GND	GND
67	PM8909_MPP4	AO-Z;DI	Configurable MPP; used for ADC IN
68	VCOIN	PI	VCOIN
69	GPIO17	B-PD:nppukp	Configurable I/O,
70	GPIO16	B-PD:nppukp	Configurable I/O,
71	TP_I2C_SCL	B;B-PD:nppukp	Configurable I/O CTP I2C
72	TP_I2C_SDA	B;B-PD:nppukp	Configurable I/O CTP I2C
73	TP_INT_N	DI;B-PD:nppukp	Configurable I/O Touchscreen interrupt
74	TP_RST_N	DI;B-PD:nppukp	Configurable I/O Touchscreen reset
75	SMB_I2C_SCL	B;B-PD:nppukp	Configurable I/O SMB I2C
76	SMB_I2C_SDA	B;B-PD:nppukp	Configurable I/O SMB I2C
77	UART1_RTS	B;B-PD:nppukp	Configurable I/O UARTor I2C SCL
78	UART1_CTS	B-PD:nppukp	Configurable I/O UARTor I2C SDA
79	UART1_RX	B-PD:nppukp	Configurable I/O UART
80	UART1_TX	B-PD:nppukp	Configurable I/O UART
81	UART2_MSM_RX	B;B-PD:nppukp	

87	GND	GND	GND
88	UIM1_DET_N	DI,B-PD:nppukp	Configurable I/O UIM1 removal detection
89	GPIO3	B-PD:nppukp	Configurable I/O
90	GPIO2	B-PD:nppukp	Configurable I/O
91	GPIO1	B-PD:nppukp	Configurable I/O
92	GPIO0	B-PD:nppukp	Configurable I/O
93	GND	GND	GND
94	VREG_L11_SDC	PO	PMIC output 2.95V
95	SDC2_SDCARD_DET		

122	MIPI_DSI0_LANE0_P	AI, AO	MIPI display serial interface 0 lane 0 –positive
123	MIPI_DSI0_LANE1_N	AI, AO	MIPI display serial interface 0 lane 1 –negative
124	MIPI_DSI0_LANE1_P	AI, AO	MIPI display serial interface 0 lane 1 –positive
125	MIPI_DSI0_LANE2_N	AI, AO	MIPI display serial interface 0 lane 2 –negative
126	MIPI_DSI0_LANE2_P	AI, AO	MIPI display serial interface 0 lane 2 –positive
127	GPIO36	B-PD:nppukp	Configurable I/O
128	GPIO90_KEY_VOL_UP	DI;B-PD:nppukp	Configurable I/O Keypad sense bit 0
129	GPIO98	B-PD:nppukp	Configurable I/O
130	GPIO95	B-PD:nppukp	Configurable I/O

4.1

4.1

	-25	-	75	
	-40	-	90	

4.3

4.3

VBAT	3.4		4.2	V
VBUS	4	5	6	V
	2.5	2.8	-	V

4.4

4.4

1.8V

V _{IH}		1.17	-	-
V _{IL}		-	-	0.63
V _{OH}		1.35	-	-
V _{OL}		-	-	0.45

4.5 SIM_VDD

4.5 SIM_VDD

V _o		-	3	-
		-	1.8	-
I _o		-	-	55

4.6 PWRKEY

4.6 PWRKEY

PWRKEY		1.4	-	-	V
		-	-	0.6	V
		2000			ms

4.7 VCOIN

4.7 VCOIN

VCOIN-IN	VCOIN	2	3	3.25	V
IRTC-IN	VCOIN	-		8	uA
VCOIN-OUT	VCOIN	-	3	-	V
IRTC-OUT	VCOIN	-		2	mA

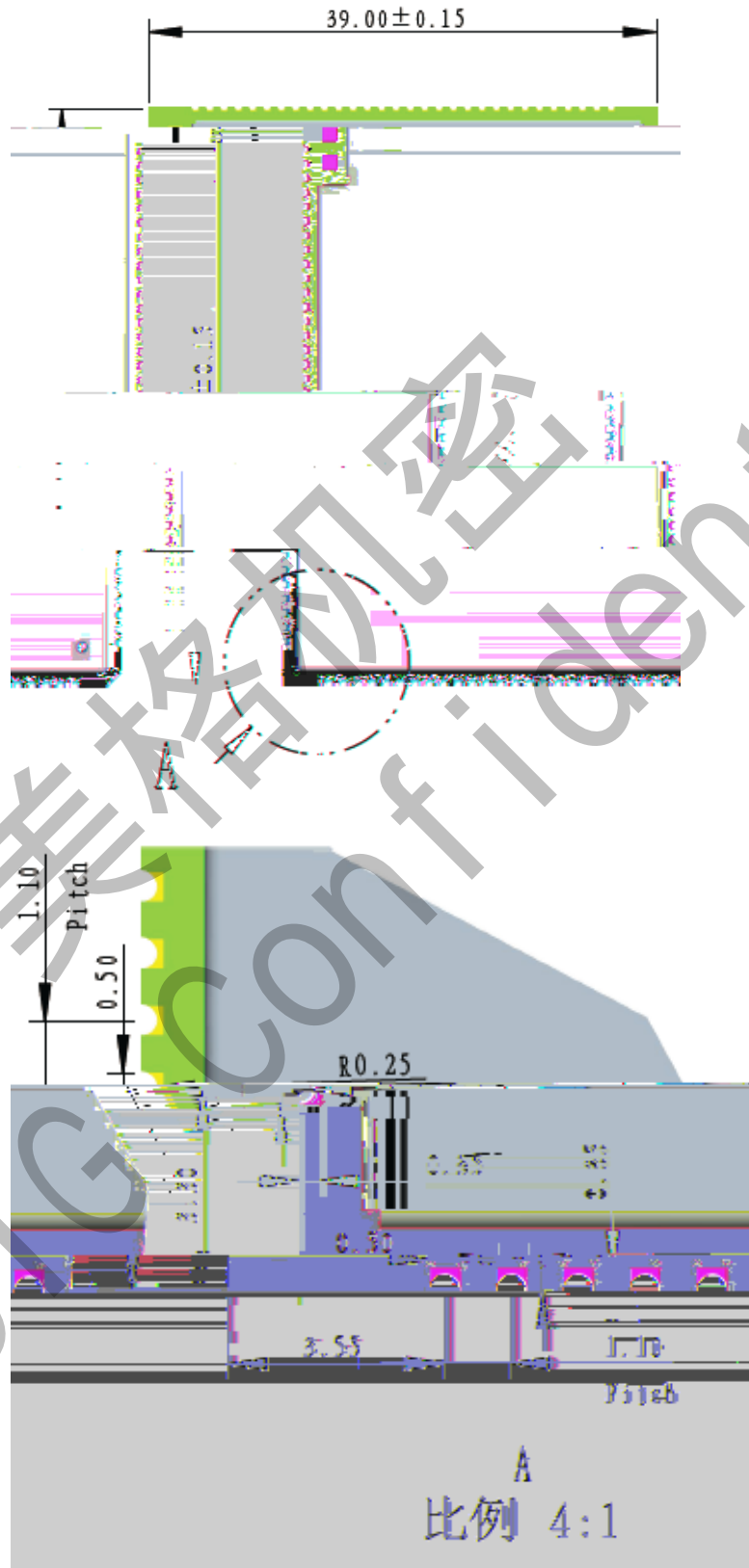
4.8 VBAT=3.8V

4.8

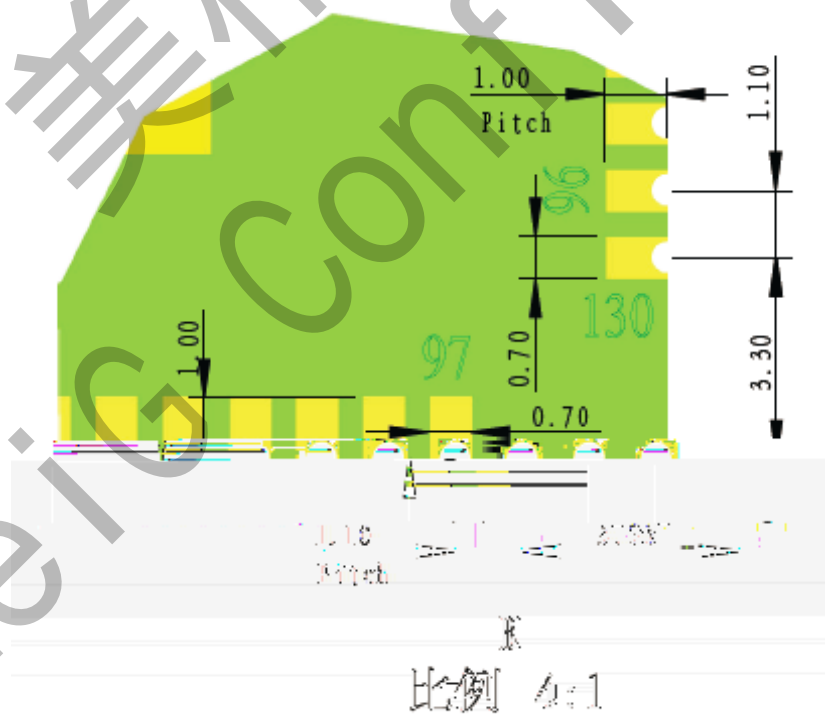
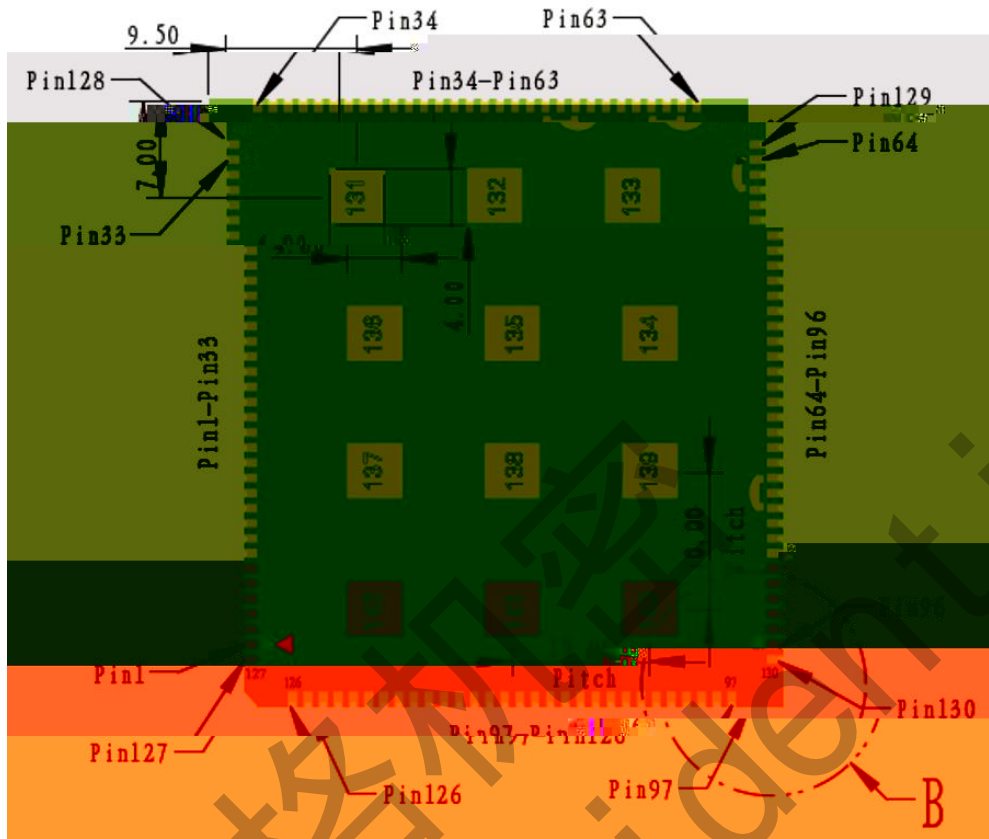
VBAT			3.4	3.8	4.2	V
Ivbat			-	-	29	uA
	GSM		-	-	2.5	mA
	WCDMA		-	-	2.4	mA

	TD-S	-	-	3.0	mA
	CDMA	-	-	3.0	mA
	FDD			2.0	mA
	TDD			2.1	mA
	GSM900 CH62 32dBm	-	-	290	mA

TOP



3 EE



比例 4:1

D



& A:

